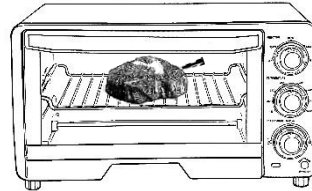
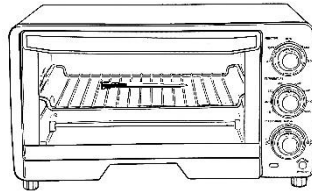


1. Introduction

ECPIN is a wireless food thermometer that gives home chefs real-time status inside the meat to avoid undercook or overcook disasters and ensuring the perfect result every time. It connects to the ECPIN APP via Bluetooth. Details and the real-time status of the meat can be read from your phone, giving you the best result at your finger tips.

2. Important Notes – Please read this carefully before use

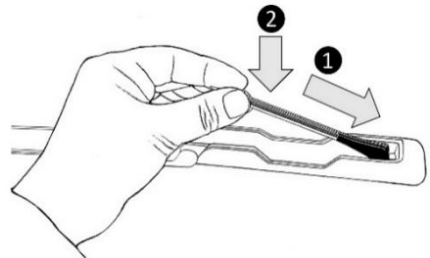
- This product is exclusive for cooking meat/food in grill or oven. It should only be used as described in the User Manual (please go to visit our website www.ectherm.com).
- **DO NOT TOUCH ECPIN WITH BARE HANDS JUST AFTER COOKING.** Always wear oven gloves to remove ECPIN from the meat after cooking.
- It is required to insert ECPIN properly into the meat/food during cooking. Do not expose the metal part of ECPIN to the heat generated by oven directly.
- Do not use ECPIN in a microwave oven.
- ECPIN can be cleaned and washed but do not immerse it long in water.
- This product is not intended for use by persons with ages 12 and under.
- Make sure the mobile phone is within the range of monitoring distance during cooking. The distance of operation is dependent on the actual cooking environment. It will be shorter if ECPIN is covered by a metal case.
- There is a built-in Overheat alert in the ECPIN APP to prevent the overheating of ECPIN. When the measured temperature is higher than 80°C or 176°F, the Overheat Alert will be triggered. Take out ECPIN from the heat source with oven gloves as soon as possible
- The supplier will not be liable for any damage of ECPIN due to misuse of the device.



3. Getting Start

3.1 Charge the ECPIN

- Put ECPIN into the charger and close the cover.
- Connect the charger to a USB power source, such as power bank, USB adapter or USB socket of PC/notebook etc. with the USB cable.
- LED of the charger will turn on and is flashing during charging. It will turn off when ECPIN is fully charged.



3.2 Download the software ECPIN APP


Go to the website by scanning the QR code in the right-hand side and download the ECPIN APP.



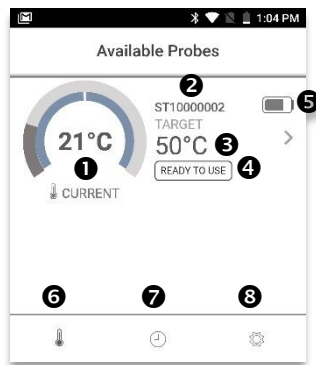
3.3 Turn on Bluetooth and Launch the ECPIN APP

After launching the APP, it will automatically search for ECPIN and show the corresponding reading as shown in diagram on the right-hand side.

ECPIN is ready to use now !!!

Remarks : You can change the setting of the APP by tapping  at the bottom.

- ❶ Current Temperature
- ❷ ECPIN ID
- ❸ Target Temperature
- ❹ Cooking Status
- ❺ Battery Level
- ❻ Temperature view
- ❼ Cooking Records
- ❽ Setting



4. To make a medium sirloin steak with ECPIN


1. Clean and charge an ECPIN
2. Insert the ECPIN fully into the sirloin steak with the metal tip located at the centre of the steak
3. Pre-heat the oven and launch the ECPIN APP
4. Go to the Cook Setup by tapping the temperature shown on the Available Probes page. Select “Beef”, “Sirloin” and “Medium”
5. Put the steak with the ECPIN into the oven
6. Tap the “Start Cook” button
7. ECPIN now is closely monitoring the status of the steak
8. When the steak reaches medium, the ECPIN APP will prompt you to take it out from the oven.
9. Take out the ECPIN with oven gloves and now you have a delicious medium sirloin steak!!!

Should you want to know more functions of the ECPIN APP, please read the user manual in more details.

5. Support

Should you have any query or require any support, please go to visit our website www.ectherm.com

6. Regulation & Compliance

For information regarding Regulation and Compliance (e.g. FCC ID), tap the setting icon  at the bottom and select “Regulation & Compliance”. For more details, please go to www.ectherm.com

FCC Compliance Statement

This device complies with part 15 of the FCC rules. Operation is subject to the following two conditions: (1) This device may not cause harmful interference, and (2) this device must accept any interference received, including interference that may cause undesired operation. Note: This equipment has been tested and found to comply with the limits for a Class B digital device, pursuant to part 15 of the FCC Rules. These limits are designed to provide reasonable protection against harmful interference in a residential installation. This equipment generates, uses, and can radiate radio frequency energy and, if not installed and used in accordance with the instructions, may cause harmful interference to radio communications. However, there is no guarantee that interference will not occur in a particular installation. If this equipment does cause harmful interference to radio or television reception, which can be determined by turning the equipment off and on, the user is encouraged to try to correct the interference by one or more of the following measures:

- Reorient or relocate the receiving antenna.
- Increase the separation between the equipment and receiver.
- Connect the equipment into an outlet on a circuit different from that to which the receiver is connected.
- Consult the dealer or an experienced radio/TV technician for help.

Any changes or modifications not expressly approved by the party responsible for compliance could void your authority to operate the equipment.

RF exposure statements

1. This Transmitter must not be co-located or operating in conjunction with any other antenna or transmitter.
2. This equipment complies with FCC RF radiation exposure limits set forth for an uncontrolled environment.

Canadian Compliance Statement

This device complies with Industry Canada license-exempt RSSs. Operation is subject to the following two conditions:

- 1) This device may not cause interference, and
- 2) This device must accept any interference, including interference that may cause undesired operation of the device.

Le présent appareil est conforme aux CNR d'Industrie Canada applicables aux appareils radio exempts de licence. L'exploitation est autorisée aux deux conditions suivantes :

- 1) l'appareil ne doit pas produire de brouillage;
- 2) l'utilisateur de l'appareil doit accepter tout brouillage radioélectrique subi, même si le brouillage est susceptible d'en compromettre le fonctionnement.

Radiation Exposure Statement:

This equipment complies with IC radiation exposure limits set forth for an uncontrolled environment.